

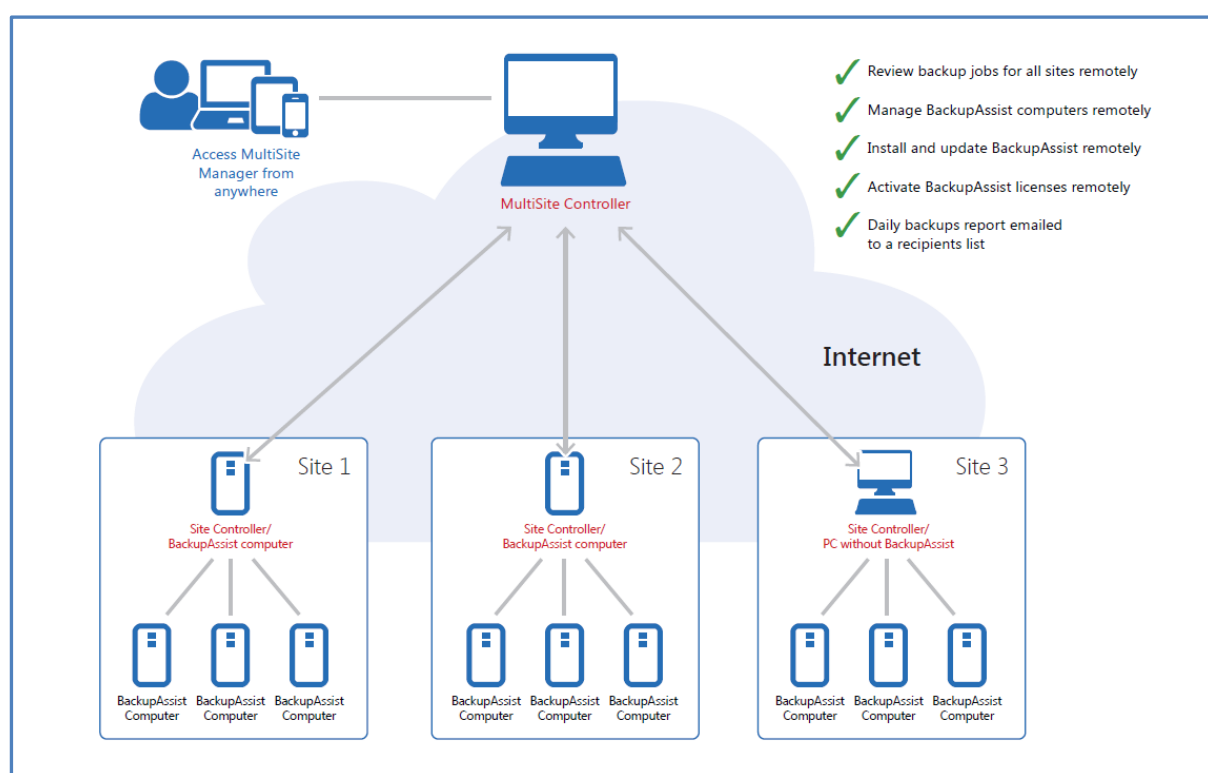
# MultiSite Manager quick start guide

**BackupAssist MultiSite Manager** is a new product that will replace Central Administration. As a unified console, it introduces a suite of new, powerful and advanced features to simplify the remote management of your BackupAssist Installations.

For a comprehensive guide to all the available features, please see the MultiSite Manager User Guide.

## How does Multisite Manager work

MultiSite Manager is a BackupAssist product that you can install to remotely administer your BackupAssist installations. This technology groups all computers on a network (LAN) into a site under a **Site Controller** and connects all your sites across the internet to a **MultiSite Controller**. You can then manage all BackupAssist installations in your WAN from the MultiSite Manager Console.



## Installing the MultiSite Manager beta

The MultiSite Manager beta will install as BackupAssist 8.0 beta. If you are performing a clean install, the process will follow the normal BackupAssist installation steps, as documented [here](#).

### Where to install the MultiSite Manager beta

- A MultiSite Manager beta must be installed onto the computer that will be the *MultiSite Controller* and computers that are used as *Site Controllers*. They do not need to be production computers.
- A MultiSite Manager beta can be installed onto any test computer and added to a Site Controller.

! We do not recommend using the MultiSite Manager beta on live or production computers.

## Setting up a computer

These steps explain how to set up a computer to be remotely managed by a Site Controller. This will also allow the computer to host the MultiSite Manager as a Site or MultiSite Controller.

1. Open BackupAssist's **Remote** tab and select **MultiSite Setup**.
2. Tick **Enable Remote Management**: For security reasons, this is not enabled by default.

3. **HTTP port**: The MultiSite Manager port - default is 8464 and it is configurable.
4. **Use HTTPS**: This must be enabled on a MultiSite Controller to enable secure communication across the internet. Enabling it on every computer will enable secure communication within a site.

**Select Certificate**: HTTPS requires a digital SSL Certificate, which your network's Systems Admin will need to generate and configure. This is a technical process that requires an understanding of your local network, server and internet provider.

5. **Create remote administrator**: Use these fields to create a login for the MultiSite Manager Console. These credentials are used to log into the console (if the console uses this computer's URL) and to add the computer to the console of another BackupAssist installation.
6. **Open in browser**: This is the URL that can be used to open the MultiSite Manager Console.
7. **Enable remote console access**: Allows your BackupAssist console to be remotely accessed.
8. **Open ports in the Windows Firewall**: This option will be selected and should remain checked. This allows communication between a web browser and the computer whose URL you are using.

! Please see the MultiSite Manager User Guide for a list of the MultiSite Managers prerequisites

## Opening the console

The MultiSite Manager is viewed using a web console that points to the MultiSite Controller or Site Controller (in a single site implementation).

 The computer used to launch the console does not need BackupAssist installed.

The following steps explain how to start and access the MultiSite Manager Console.

1. Open a web browser and enter the URL displayed in the *Open in browser* setting (in the MultiSite Setup dialog) of the computer being used as the Site / MultiSite Controller. This link should be saved as a favorite.

Computer label:	WS-RI
Computer ID:	402de541-1174-4861-b1bd-13
Open in browser:	<a href="http://WS-RI.CortexIT.local:8464/">http://WS-RI.CortexIT.local:8464/</a>

In BackupAssist, you can also launch MultiSite Manager from the BackupAssist *Remote* tab.

2. Sign in with the credentials defined in the Site / MultiSite Controller's *MultiSite Setup*.

## Navigating the console

The MultiSite Manager has three tabs down the side and menus along the top. The top tab will display either **All Sites** or **Managed Site** depending on what level you are in. The contents of tabs 2 and 3 depend on what level you are in - as shown in the table below.

### All sites tab selection

Tab	Tab name	Displays	Specific Features
1	<b>All Sites</b>	All managed sites	<ul style="list-style-type: none"> <li>Access/ Edit site</li> </ul>
2	<b>Reports</b>	MultiSite Manager report configurations	<ul style="list-style-type: none"> <li>Global email report</li> <li>Alerts</li> <li>Jobs status (all/last 24hrs)</li> </ul>
3	<b>Licenses</b>	Licenses of all BackupAssist installations on all sites	<ul style="list-style-type: none"> <li>Info only</li> </ul>

### Manage Site tab selection

Tabs	Tabs	Displays	Specific Features
1	<b>Managed Site</b>	<b>Computers screen</b> - displayed by accessing the site	<ul style="list-style-type: none"> <li>Remote install</li> <li>Remote Session</li> <li>Add computers</li> <li>Register to MultiSite</li> </ul>
		<b>Backup jobs screen</b> -displayed by accessing a computer	<ul style="list-style-type: none"> <li>System Info</li> <li>Technical Support</li> </ul>
2	<b>Site Alerts</b>	All Alerts for the site	<ul style="list-style-type: none"> <li>Site email report</li> </ul>
3	<b>Site Licenses</b>	All BackupAssist licenses in the site	<ul style="list-style-type: none"> <li>Active/ deactivate</li> </ul>

## Setting up a single site (LAN)

So far we have looked at how to set up the MultiSite Manager on a computer, and how to open the MultiSite Manager Console. Now let's look at how to set up a site.

### To set up a single site:

1. Select a computer to be your **Site Controller**. This computer will be used to connect to the managed computers in that site. The *Site Controller* will remember and authenticate the computers added to it, so you should choose one computer to be your Site Controller and use it every time.
2. [Open](#) the MultiSite Manager Console, using the URL of your designated Site Controller.
3. If you are in the *All Sites* tab, open the site to access the *Manage Site* tab.
4. Select *Add Computer* and enter the following into the configuration window:
  - The host name of a computer that you want to add to the Site Controller.
  - The username & password you entered during the [MultiSite Setup](#) for that computer.
5. Repeat this process for every computer to be added to the site.

Now you can [navigate](#) the MultiSite Manager and remotely manage all of the BackupAssist installations in the site.

## Setting up multiple sites (WAN)

To create a single site, you add computers to a Site Controller. To create a multi-site model, you register the sites you have created to a MultiSite Controller. You need to select a computer to be the MultiSite Controller, and connect to its URL to administer all of your sites.

The *MultiSite Controller* will remember and authenticate the sites registered to it, so you need to choose one computer to be your *MultiSite Controller* and use it every time.

### To add a site:

Sites are not added using the MultiSite Controller. Instead, you connect to each Site Controller and register that site to the MultiSite Controller. A detailed description of this process can be found in the MultiSite Manager User Guide.

To register (add a site) to the MultiSite Controller:

1. Connect to the URL of the local Site Controller for the site that you want to add.
2. If you are in the *All Sites* tab, open the site to access the *Manage Site* tab.
3. Select *Register MultiSite Manager* to open the registration window and enter:
  - The IP address or host name of the MultiSite Manager.
  - The username & password you entered during the [MultiSite Setup](#) of the MultiSite Controller.
  - A name for the registered Site. The name is displayed on the MultiSite Controllers' *All Sites* tab.

 See the MultiSite Manager User Guide for firewall configurations and SSL certificate information.

This is the only time you need to connect to individual Site Controllers in a multi-site environment. Once a site has been added, it can be managed from the MultiSite Controller, including adding more computers to the site.